



APACHE®
BICYCLES

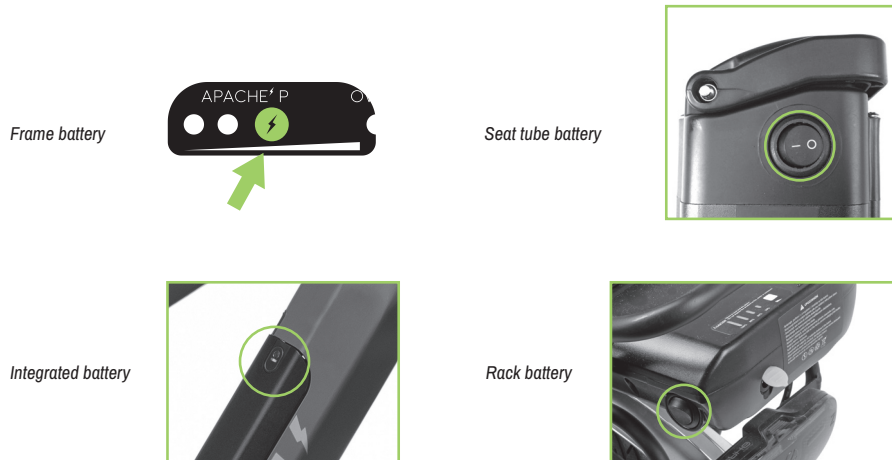
EN

QUICK START

Starting the electric drive system

- 1) Turn on the power by pressing the button on the battery shortly. The LEDs will light up and display immediate status of battery capacity*. To turn off the power, hold the button for 4 seconds.
- 2) Select the level of assistance [see section System control]

*If the battery cannot be switched on by pressing the button shortly, connect it briefly to the charger.



Battery charging

- 1) Connect the battery to the charger
- 2) Plug the charger into an electrical outlet
- 3) LED on the charge will light up (red = charging; green = charged)

LEDs on the battery indicate the status of charging. Flashing of LEDs means that the battery is charging. Once fully charged, all LEDs light up.

WARNING

The battery can be charged regardless of the current capacity. Before riding, check and make your battery is charged sufficiently.
If the battery is completely discharged, charge it to a half its capacity as soon as possible, and interrupt charging to cool it down. Then, charge it to its full capacity. Leaving the battery discharged reduces its life substantially.
If the e-bike is not to be used for a long time, store the battery charged to approximately 50%, and check its status every 1-2 months to avoid a full discharge.

Removing and inserting the battery

Rack battery



Turn the key by 180° to remove the battery. Hold the battery by the handle located underneath the battery, and pull it out of the rack. To insert the battery, proceed in reverse order.

Seat tube battery



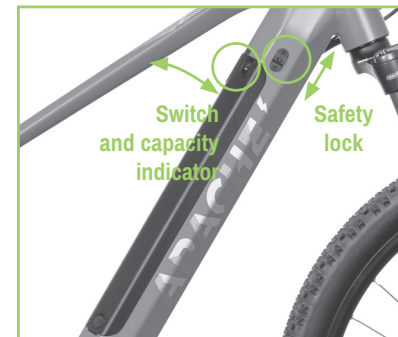
To remove the battery, first pull out the seat tube with saddle from the frame. The lock is placed at the bottom of the battery. Then turn the key to UNLOCK position and remove the battery by pulling the handle upwards. The battery is inserted in reverse order. Set the battery groove on the guide rail, otherwise it will not slide down into correct position. Insert the battery carefully to avoid damaging the connector. To secure the battery, turn the key to LOCK position and remove the key.

Frame battery



Turn the key by 180° to remove the battery. Hold the battery firmly and pull it upwards from the holder. To insert the battery, proceed in reverse order. Install the battery carefully to avoid damaging the bottom connector.

Integrated battery



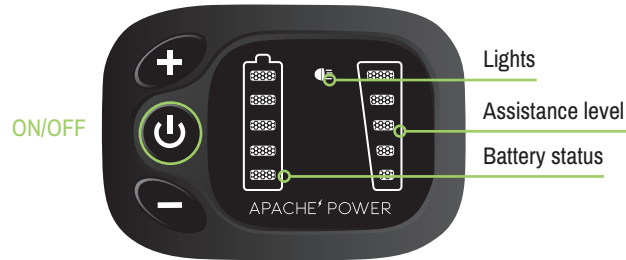
To remove the battery, slide the safety lock on the right side of the frame in riding direction and then, turn the key by 180° - the battery will pop up slightly. Hold the battery in its top and pull up diagonally to release it.
To insert the battery, first set the battery on the bottom connector, and then press the top until you hear a snap of the safety lock. Turn the key to lock the battery.

System control

E-bike system is controlled by the controller located on the left side of the handlebars next to the grip.

LED panel

[Tanka, Tanka Nexus, Tocho, Tocho Nexus, Dakotah]



Setting the assistance level:

To change the assistance level in the range 1-5, press the buttons **+** **-**.

Walking assistance:

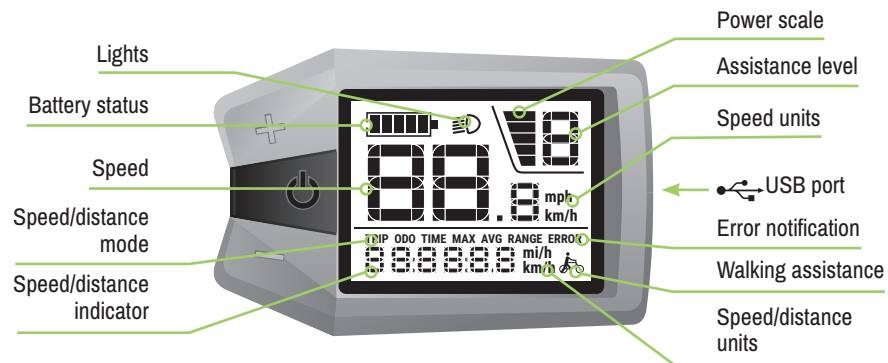
To activate walking assistance, press and hold the button **-**. The speed of the e-bike ranges from 4 to 6 km/h. The walking assistance will be switched off as soon as the button is released.

Switching lights on/off

To switch the lights on/off, press and hold the button **+** for 1 second.

Codac display

[Tuan E4, Yamka E4, Matto Tour E4, Matta Tour E4, Matto E6, Matta E6, Tate 24, Gaagii, Gaagii Lady, Wakita Tour, Wakita City]



Setting the assistance level:

To change the assistance level in the range 0-5, press the buttons **-** **+**. The highest assistance level is marked with by 5, whilst the mode marked with 0 is without the assistance of an electric motor.

Walking assistance:

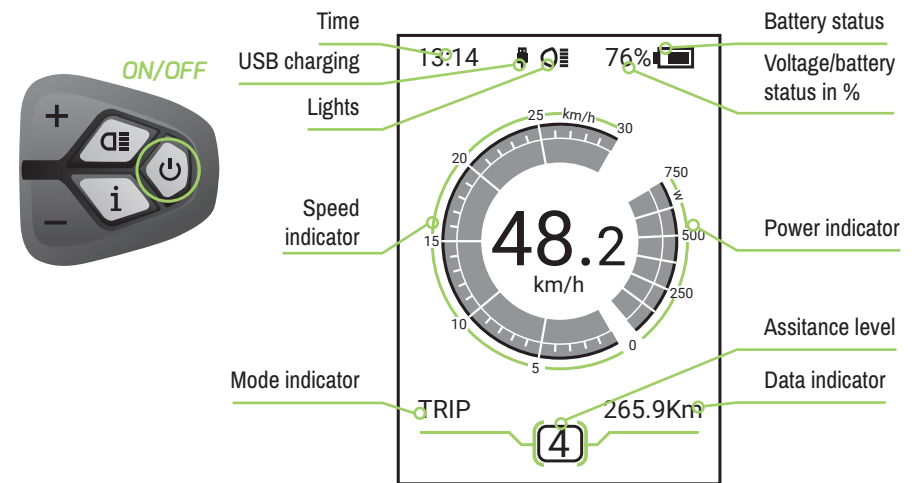
To activate walking assistance, press and hold the button **-**. The speed of the e-bike ranges from 4 to 6 km/h. The walking assistance will be switched off as soon as the button is released..

Switching lights on/off

To switch the lights on/off, press and hold the button **+** for 1 second.

TFT Color display

[Tuan MX-I 1, Yamka MX-I 1, Tuan MX-I 3, Yamka MX-I 3, Matto MX-I, Matta MX-I, Matto Tour MX-I, Matta Tour MX-I, Wakita Tour MX]



Setting the assistance level:

To change the assistance level in the range 0-5, press the buttons **-** **+**. The highest assistance level is marked with by 5, whilst the mode marked with 0 is without the assistance of an electric motor.

Walking assistance:

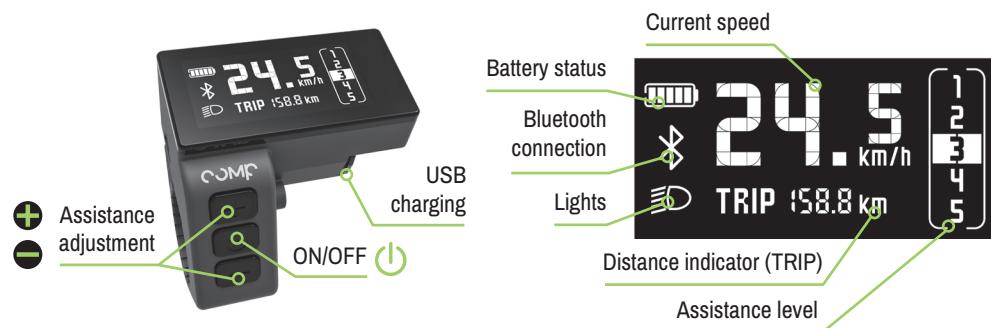
To activate walking assistance, press and hold the button **-**. The speed of the e-bike ranges from 4 to 6 km/h. The walking assistance will be switched off as soon as the button is released.

Switching lights on/off

To switch the lights on/off, press and hold the button **+** for 1 second.

Comp RM-1 display

[Payat Comp 1, Payat Comp 3, Tuwan Comp, Yamka Comp]



Setting the assistance level:

To change the assistance level in the range 0-5, press the buttons **+** **-**. The highest assistance level is marked by 5, whilst the mode marked with 1 is the lowest. The set level of assistance is highlighted on the display. If no number is highlighted, the assistance is turned off completely.

Walking assistance:

By pushing the button **⏻** shortly and right after holding the button **+** walking assistance will be activated. It will be on until releasing the button **+**.

Walking assistance:

By pushing the button **i** shortly and right after holding the button **WALK** walking assistance will be activated. It will be on until releasing the button **WALK**.

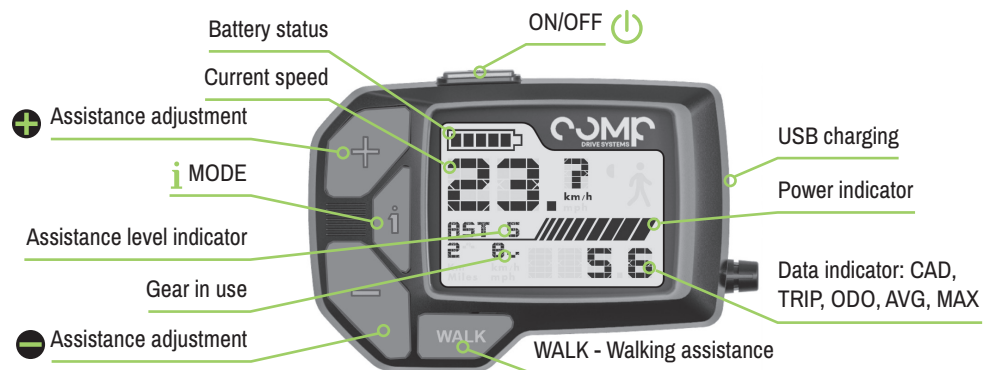
Full user manual



EN

Comp S18 display

[Matta Comp, Matta Comp]



Setting the assistance level:

To change the assistance level in the range 0-5, press the buttons **+** **-**. The highest assistance level is marked by 5, whilst the mode marked with 1 is the lowest. The set level of assistance is shown on the display. If 0 is indicated, the assistance is turned off completely.



APACHE[®]
BICYCLES